

## Summary

GainSeeker 7.5 introduces new features for supporting localized (non-English) deployments. However it does not meet all the requirements for a fully localized release. This white paper outlines what can and cannot be done with the system.

What	Description	Status
Operator prompts during data entry.	Messages given to the operator during data entry. Examples might include “Type in a Customer Name” or “Select a defect reason”.	Operator prompts are completely user-defineable and may be written in any language. There are some issues with Chinese characters.
Real time messages	Messages delivered during a real-time failure. Examples might include “Out of control on the Range Chart”.	Real time messages are completely user-defineable and may be written in any language.
User-defined labels	Traceability fields such as “Customer”, “Operator ID” and so forth.	User-defined labels are completely user-defineable and may be written in any language.
Statistics labels	Labels used to identify descriptive statistics such as “Specification Limits”, “Capability Index” and so forth.	Statistic labels are completely user-defineable and may be written in any language.
Windows International Settings	Through Windows Control Panel, users can set their currency and decimal settings to match their local practices. These settings control the position and use of decimal points, date/time and so forth.	GainSeeker v7.5 introduces full support for Windows international settings.
Information and Error Pop-up messages	Notices and error messages generated by GainSeeker Suite to let customers know when something didn’t work as expected. For example, if the user tries to perform a function for which he does not have security clearance, he will get a message to explain why he can’t perform the function.	Pop-up messages are in English
Menus	Drop-down menus (File, Send To...).	Menus are in English
Dialog boxes	Dialog boxes that guide a user through an activity such as the Quick Chart dialog in SPC Charts & Reports	Dialog boxes are in English.

# Data Entry Examples

Menus cannot be translated

1 Data Entry | 2 Traceability | 3 Data Table | 4 Statistics | 5 Defect Entry | 6 Part photo | 7 Discrepancy | 8 Flow Chart | 9 MINITAB Six Pack

## Enter Diameter X for Part #1

49.

F-60SOR Diameter X

50mm Collar

Previous: Lot  
050418112019

F-60SOR Diameter X, Cpk: 2.11

F-60SOR Diameter Y, Cpk: 4.38

Cell J1, Keyboard, No formula

FB Tour Manager

Operator prompts, Tab settings, User-defined labels – basically everything in the bottom part of the screen – can be translated.

1 Data Entry | 2 Traceability | 3 Data Table | 4 Statistics | 5 Defect Entry | 6 Part photo | 7 Discrepancy | 8 Flow Chart | 9 MINITAB Six Pack

Show traceability for: F-60SOR Out of Round | 50mm Collar

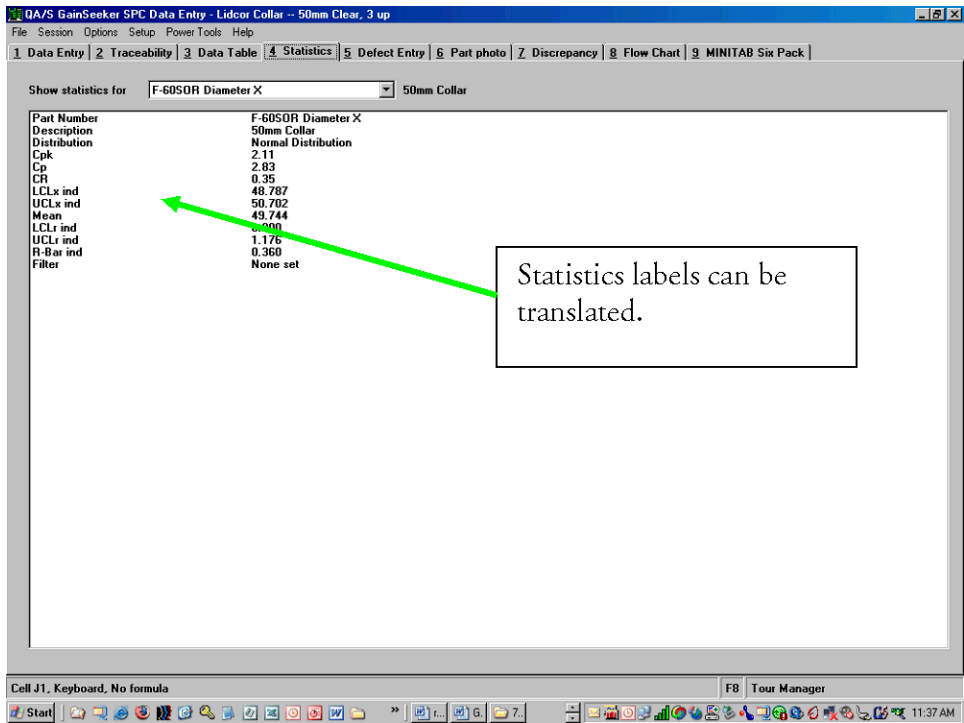
Date/Time	4/18/2005 11:36:18
Lot	050418112019
Shift	1
Department	MOLDING
Machine	1400 OUT OF ROUND
Cavity	1 CAVITY 01
Operator	1134 BURNS M.
Work Order	
Serial Number	
Inspector	
Batch Number	
Gage ID	
Event	
Cause	
Action taken	
Bypass	
Data 1	
Data 2	
Data 3	

Include record

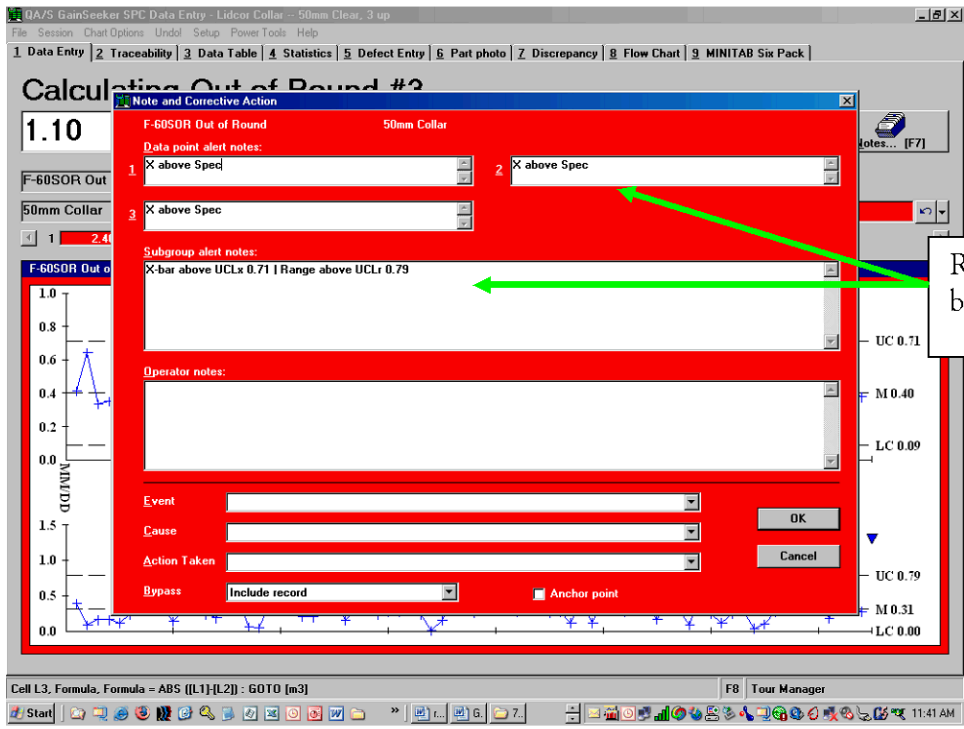
Cell J1, Keyboard, No formula

FB Tour Manager

Traceability labels can be translated.

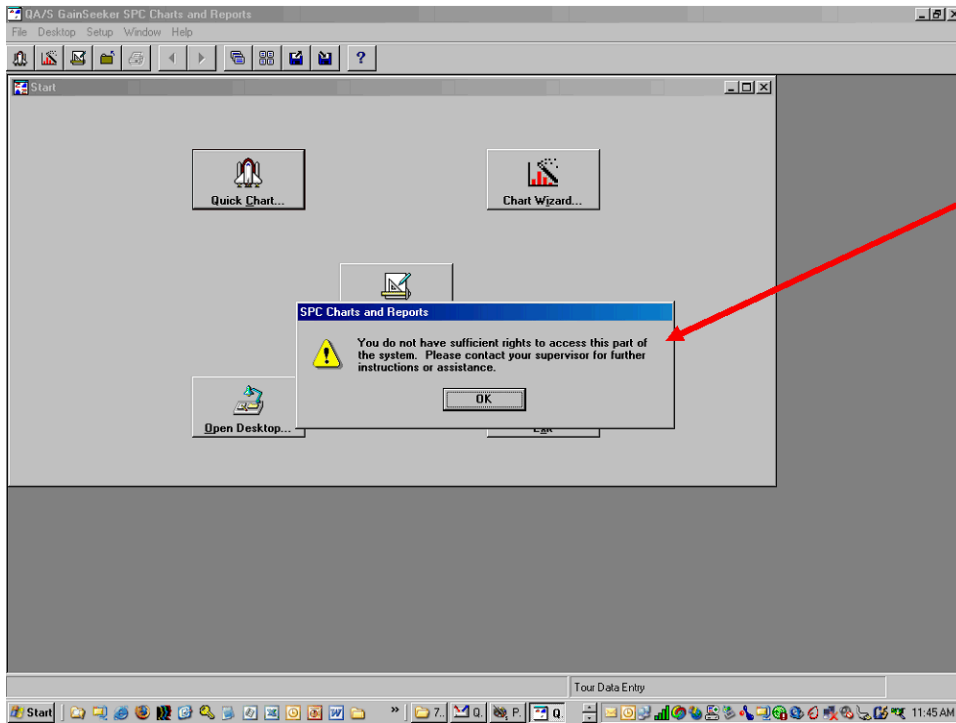


Statistics labels can be translated.

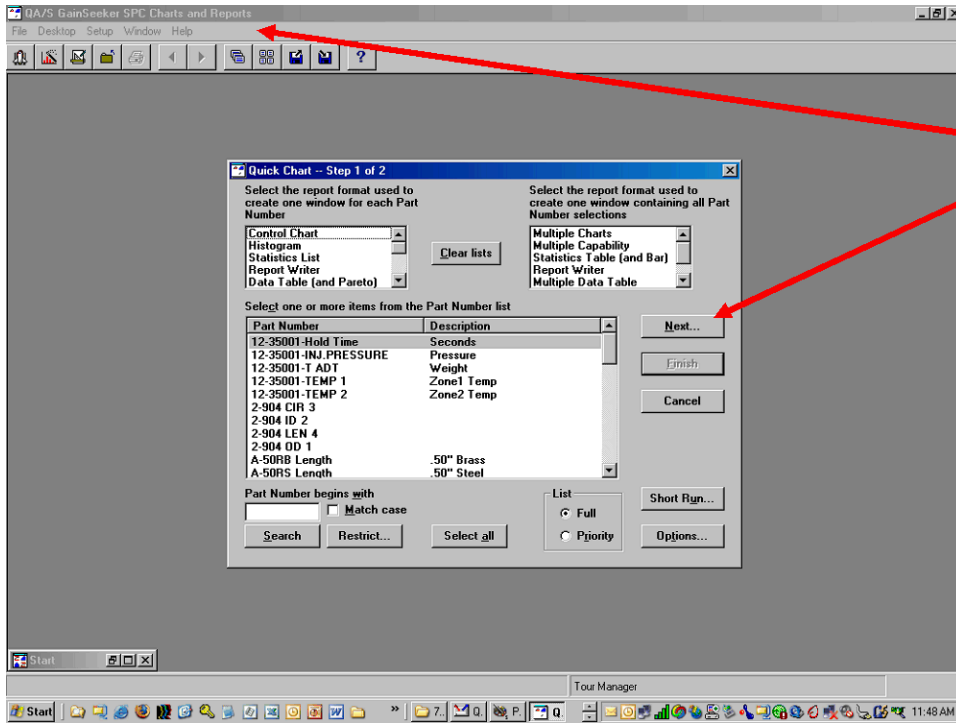


Real Time Messages can be translated.

# Charts and Reports Examples

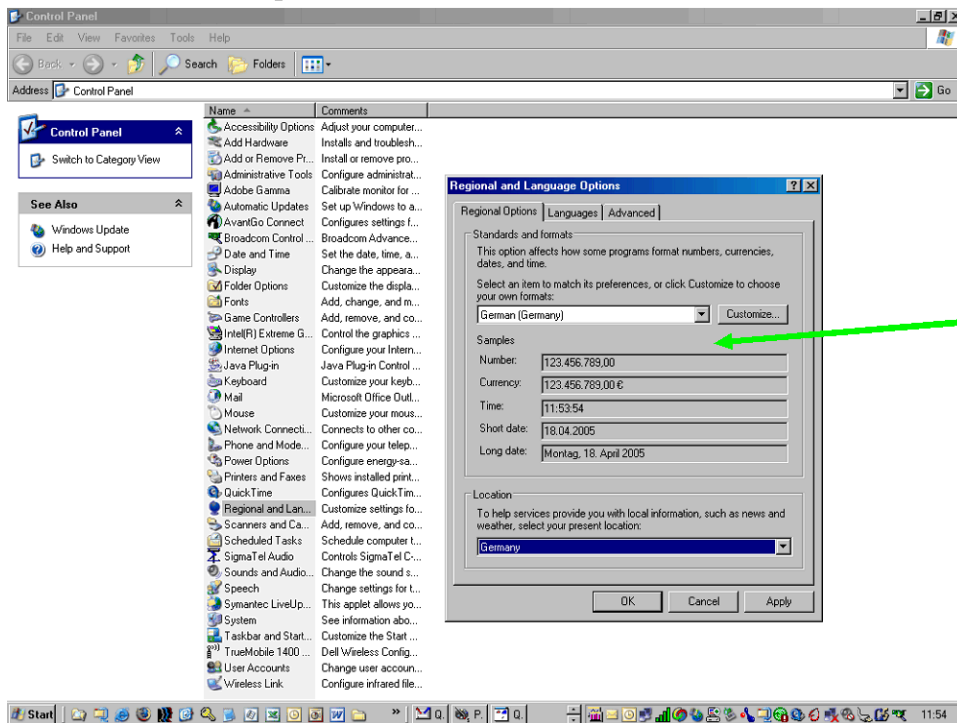


Pop up Messages cannot be translated.



Menus and Dialog boxes Messages cannot be translated.

# Windows Settings



Windows Regional Settings are supported in GainSeeker Version 7.5 and later.