

General Improvements with GainSeeker versions 8.3.1 and 8.3.0

Contents [\[Show\]](#)

Upgrading to versions 8.3.1 and 8.3.0

The GainSeeker Installation and upgrading instructions for the System Requirements have been changed to reflect this information:

- [The Microsoft .Net Framework](#) version 3.5 Service Pack 1 is installed on all workstations or on your terminal server. Installing this version of the .Net Framework requires a computer reboot.

For more information, see [Installing or Upgrading GainSeeker](#)

What's new in GainSeeker Service Pack 8.3.1

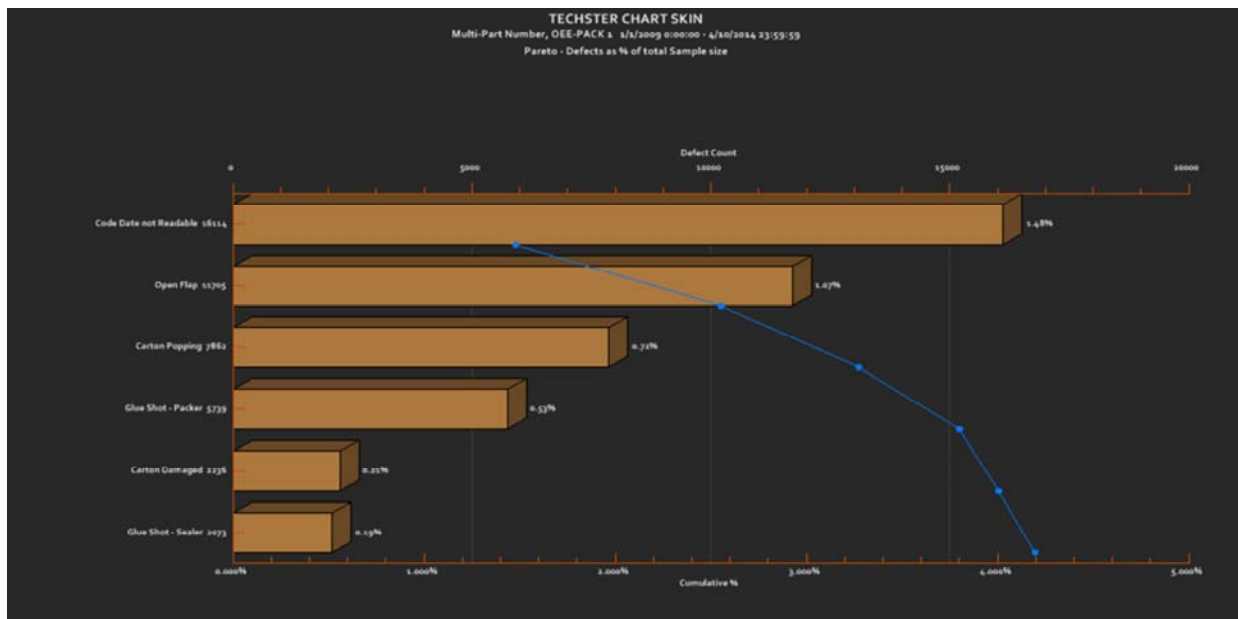
Save display settings as a Chart Skin

Now you can save multiple display settings as a chart skin that can be easily and quickly applied to charts. While this makes analyzing data more visually engaging, it also has practical applications. All settings in the **Charts Overrides** node of the charts **Settings** dialog in the GainSeeker Charts module can be saved as a DMS or SPC skin, including what limits to display, how data is scaled, chart titles, and more.

You can also apply a Chart Skin to a [Dashboard chart](#)

GainSeeker System administrators might want to use chart skins to standardize how chart data displays for all users. This can help ensure that all the analysts in your organization see data displayed the same way, which can be important when decisions are made based on data.

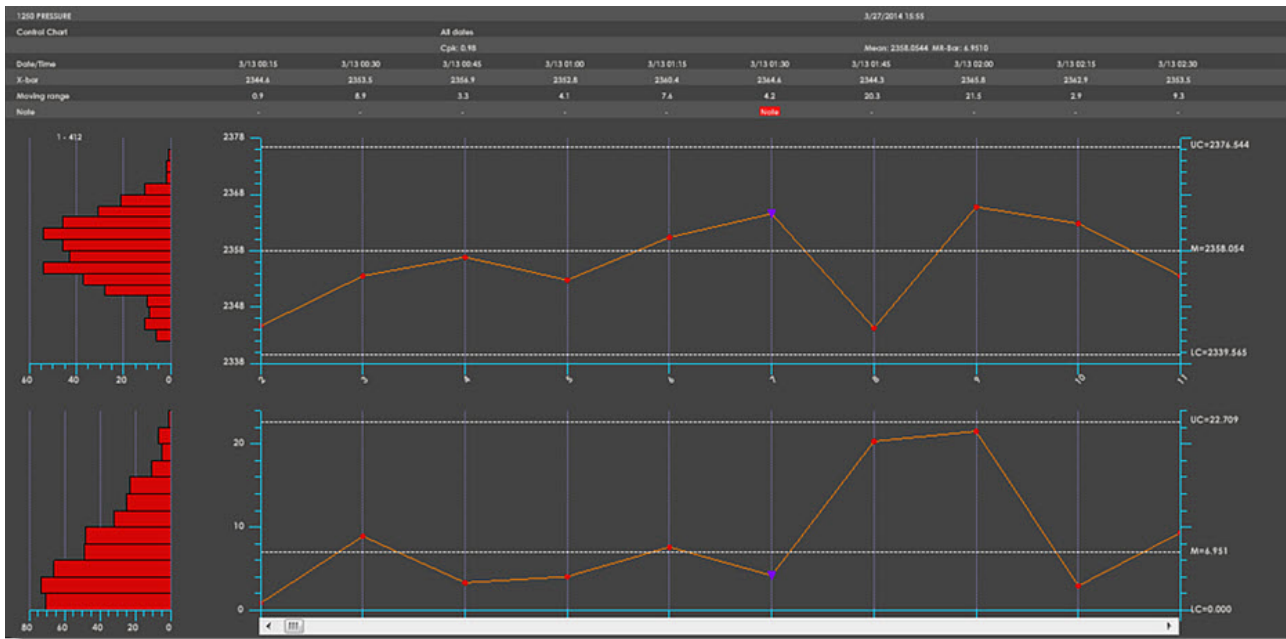
For more information, see [Chart Skins](#)



Try these ready-to-apply chart skins included with GainSeeker

Above is an example of a Control chart with the **Techster** Chart Skin applied, one of the ready-to-apply chart skin themes now included with GainSeeker. Below is an example of **Data Head** Chart Skin.

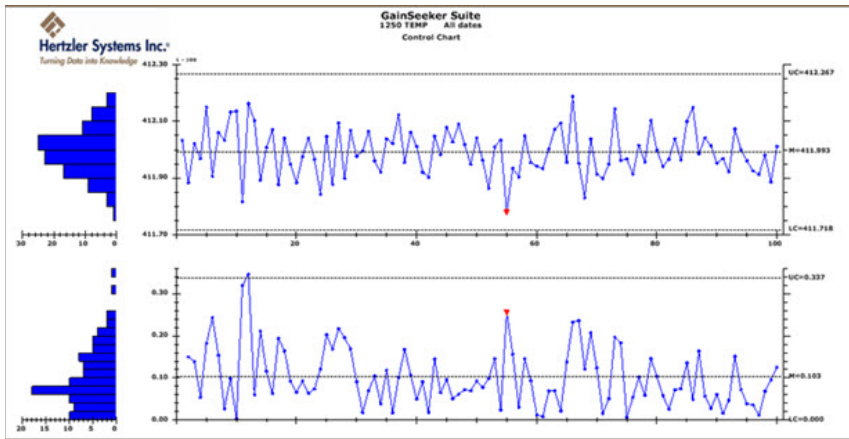
- For more information and examples, see [Chart skins included with GainSeeker](#)



Add an image to the chart background

Now you can add an image to the background of a chart. In addition to making your data analysis more visually engaging, it can serve a practical purpose. For example, if your company sends a copy of a chart with shipped product, you might consider adding an image of your company logo to the chart background as shown in the upper-left corner in the chart below. You can also save the background image as a [chart skin](#)

For more information and examples, see [Adding a background image to a chart](#)



Specify a color for each OEE metric

Now you can specify a color for each of the OEE metrics: Availability, Performance, Quality, and overall OEE. The assigned colors carry over to the OEE Combined chart and help you identify each data metric when you save them on a desktop, for example, as shown below. Applies to OEE line- and bar-type charts. See [Using colors for OEE Data](#) for more information.



Send a desktop to Microsoft PowerPoint or Word

Now you can send all the charts and dashboards saved on a desktop directly to a Microsoft PowerPoint presentation or to Word. You can also select only specific items to send.

- See [Sending desktops to PowerPoint](#)
- See [Sending desktops to Word](#)

Specify the stack order of dashboard controls

You can specify the order in which dashboard controls display on a dashboard window—which ones display in the foreground in the event they overlap. This is called the "Z-order" of objects.

- See [Specifying the Z-order](#) for more information.

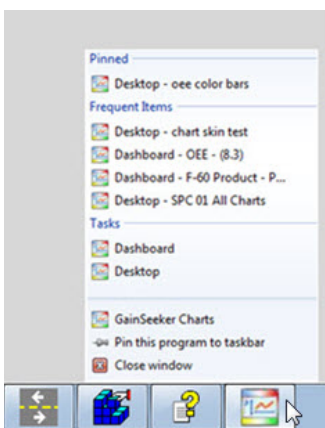
Send data from a Dashboard Grid control to Microsoft Excel

Now you can use the right-click [Send Control To](#) menu option to send data for a [Dashboard Grid control](#) to Microsoft Excel.

Window's Jump Lists feature enabled for GainSeeker

Now you can use the Windows Jump List feature with GainSeeker to gain quick access from your workstation's taskbar to desktops, dashboards, and reports you have recently used. Available for GainSeeker Charts dashboards and desktops, and Dynamic Reports.

- For more information, see [Using GainSeeker's Jump Lists feature](#)



New command line arguments

New parameters to have GainSeeker automatically open a desktop with these retrieval options you set for charts:

- Specify DMS part numbers and/or processes, and SPC part numbers for desktop charts
- Set a filter for the retrieval
- Set a date period for the retrieval
- See [Open a desktop](#) for more information

New parameters to have GainSeeker automatically open OEE charts.

- [OEE Chart types parameters](#)

Updated or new template commands for version 8.3.1

- New [MARPOSS_DISCONNECT](#) disconnects all devices. The new [MARPOSS_UNLOAD](#) command removes the Marposs software driver from memory. See these topics for more information and information on related commands.
- Used in conjunction, commands [CHT_OPT_DMS 99, ""](#), [CHT_OPT_DASH 99, ""](#), [CHT_OPT_SPC 99, ""](#), destroy the chart COM object so it can be recreated the next time a chart is drawn.
- New [MISC_INFO 13](#) command returns a string representing the installed GainSeeker version of the DESPC.exe (returns **8.3.1**, for example). This knowledge can be used to help you determine whether you want to proceed with certain functions for a workstation.
- [IF](#) command is capable of performing multiple tests (conditionals) for an IF command. [AND](#) and [OR](#) can now be used in an If/Then/Else statement.
- New [DE_OPT 37](#) parameter disallows operator from automatically advancing to the next cell after selecting a traceability from a list. If disallowed, operators can manually advance to the next cell.
- New [DE_OPT 38](#) parameter enables display of a new **Enter** key button on the SPC Data Entry screen. The button, which can be relabeled from **Enter** using the [Text_Opt 4](#) command, is located adjacent to and left of the external applications button when both buttons are enabled. A practical use for the **Enter** key button is to restart a template that is stopped due to an operator clicking on a tab, for example, to view a data table.
- New [MISC_INFO 12](#) command returns the current cell of execution in the template.
- [Updated or new template commands in other recent GainSeeker releases](#)
- The DMS Data Entry [on_save](#) cms.ini setting is updated to not fail using the default useqry setting (1) in convert.db. However, you must set useqry=0 for this feature to work correctly. Note: This only applies to Microsoft SQL Server.

New utility removes all traces of GainSeeker from a workstation

- For more information, see [Cleanup8.exe](#) utility.

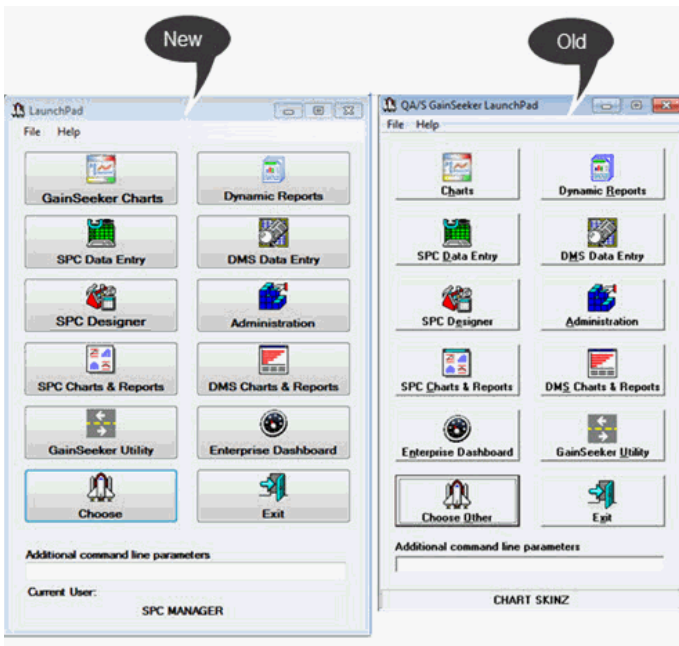
Enhancements to some GainSeeker Utility module functions

- The **SQL Utility** now allows you to Import and export SQL statements, and have multiple copies of the utility running simultaneously in GainSeeker. See [GainSeeker SQL Utility](#) for more information about this utility.
- Now you can edit lists for Traceability, Cause, Event, or Action directly from the **GainSeeker Lists** function. See [GainSeeker Lists](#) for more information.
- Now you can filter notes by their content and by RTF (real-time failure) flag. For example, you could limit the list of notes to those containing the words "material change." For more information, see [Note Manager](#)

LaunchPad features updated interface and functionality

GainSeeker **LaunchPad** is revamped with an updated, but familiar display. A few changes improve **Choose** button and **File** menu functionality. **LaunchPad**'s quick-start buttons offer access to GainSeeker modules with a click.

- For more information, see [Launching GainSeeker modules from LaunchPad](#)



What's new in GainSeeker version 8.3

OEE charts in the GainSeeker Charts module

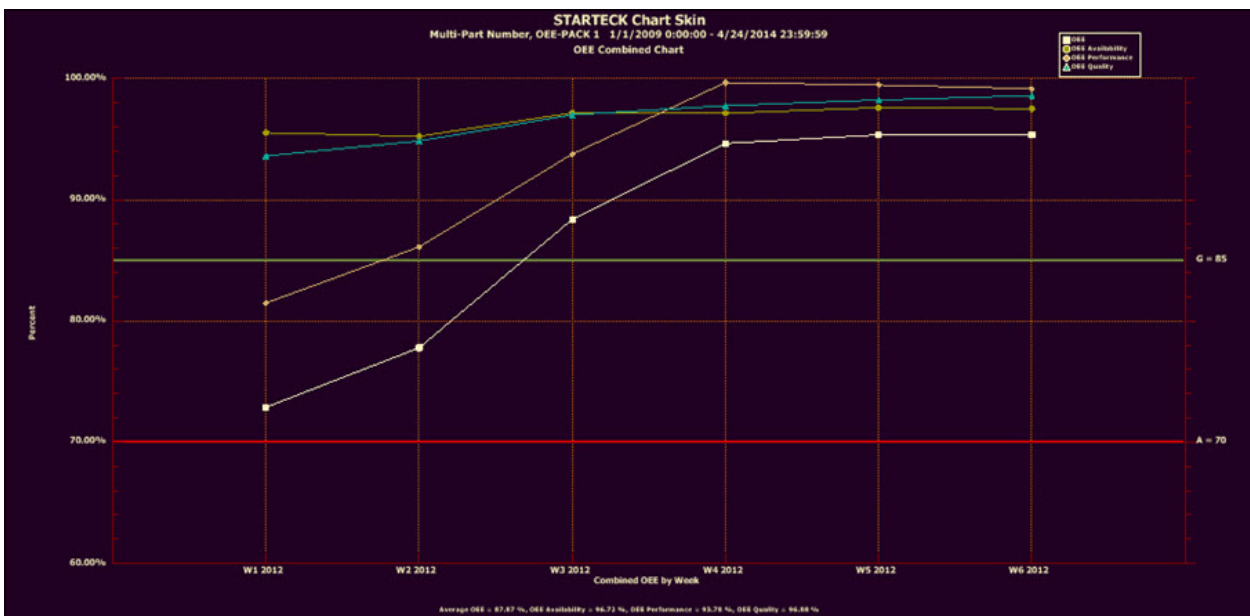
Improve the efficiency of your planned production time

OEE (Overall Equipment Effectiveness) tells you the percentage of time that your planned production time is fully utilized. GainSeeker calculates the overall OEE percentage using the percentages from three submetrics measured in your plant: [Availability](#), [Performance](#), and [Quality](#). An overall OEE percentage of 85% or more is considered World Class Manufacturing. OEE charts are similar to DPU charts in that they use percentages to group data by a time period, such as shift, hour, day, or week.

Use OEE data to:

- Learn if you are getting the most from the assets you have.
- View plant data by each shift for each day or pick from multiple other time increments or a traceability.
- Pinpoint times and shifts when production tends to flourish or falter.
- Increase equipment reliability and reduce downtime through planned maintenance instead of reactive repair.
- Identify missed opportunities when more first-pass yield could have been produced.

See [OEE Charts](#) for more information

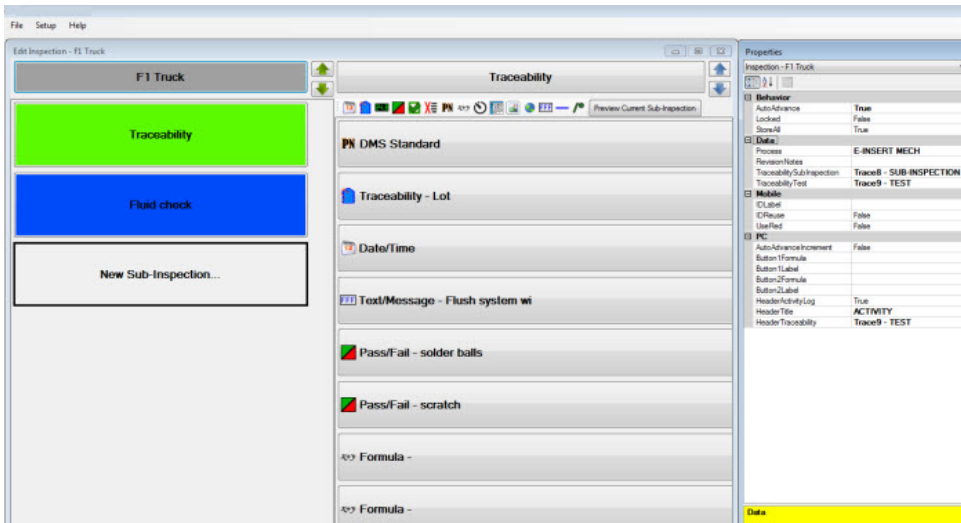


GainSeeker Inspections module

Easily create comprehensive inspections to run on a Mobile Device, PC, or both

The GainSeeker Inspections module features the Inspection Editor shown below. Use it to create inspections you can have up and running in minutes. No template writing is required, but you can optionally write templates to create advanced inspection enhancements.

- **No template writing required.** Have a new inspection up and running in minutes.
- **Use it to store [defect data and data without defects.](#)** Storing both data types produces a record that the inspection was performed. You can still opt to only store data with defects.
- **Integrates with your existing GainSeeker system** just like all other GainSeeker modules. The Inspections module can use any processes, defects, DMS and SPC standards, and traceability fields you have defined in your GainSeeker system. You can always add more for use in your inspection.
- **Advanced inspection customization options.** This feature is not necessary to create comprehensive inspections, but GainSeeker inspections can be further customized to meet your advanced requirements using the **Formula** feature of the Inspection Editor. This is recommended for use only by Hertzler Systems technical experts or others who are confident working with coding languages.
- [Examples of PC and Mobile Device inspections](#)



GainSeeker Utility module

Improved functionality and easier to use functions—revamped and all in one module

The GainSeeker Utility module is a collection of practical functions designed to help you easily maintain your GainSeeker system. The [legacy Utility modules](#) are still available in GainSeeker version 8.3 .

- See [About the GainSeeker Utility Module](#)



Updated or new template commands version 8.3

- New [TABLE_GET_ITEM](#) and [TABLE_SET_ITEM](#) commands read and write to the HSIRPT table.
- New [MARPOSS_CONNECT](#), [MARPOSS_SCALING](#), and [MARPOSS_ACQUIRE](#) commands provide an interface to the Marposs EasyBox device.
- New [SAVEROWS -1](#) command only saves rows that are associated with a valid standard.
- New [DATAROWSOK -1](#) command only displays rows that are associated with a valid standard.
- New [RS232 alternate commands](#) accelerate data acquisition.
- Updated [RS232_errmsgs](#) Cms.ini value correctly reports error messages. Previously, setting the value to 1 suppressed error messages instead of reporting them as it was intended to do.
- Updated [DEFECTID](#) command disregards the case of a defect description. For example, it will identify "Broken" and "BROKEN."
- [Updated template commands in recent pre-version 8.3 releases of GainSeeker](#)

New Group DPU or OEE chart data by options

Now you can group data on an OEE or DPU chart by **Day/Shift** or several other added time increments. Data grouped by **Day/Shift** displays data for each shift in a 24-hour day.


- For more information about these settings, see [Group data by](#)

New DMS cost information option

- New DMS cost information setting lets you choose to have GainSeeker use cost information from a traceability column you select. See [Use traceability column for cost information setting](#)

Hertzer Systems planning to phase out of some legacy GainSeeker modules

The following modules are legacy GainSeeker modules. They are still available with version 8.3 for alternate use.

The new [GainSeeker Utility](#)  module can now be used in place of these legacy modules:

- QA/S GainSeeker Import/Export Manager Utility
- QA/S GainSeeker Priority List Editor Utility
- QA/S GainSeeker Audit Trail Utility
- QA/S GainSeeker Lists Utility
- QA/S GainSeeker Transfer Utility
- QA/S GainSeeker SQL Utility
- QA/S GainSeeker SPC Standard Utility
- QA/S GainSeeker Note Manager

The [GainSeeker Charts](#)  and the [Dynamic Reports](#)  modules can now be used in place of these legacy modules:

- DMS Charts and Reports
- SPC Charts and Reports
- Enterprise Dashboard